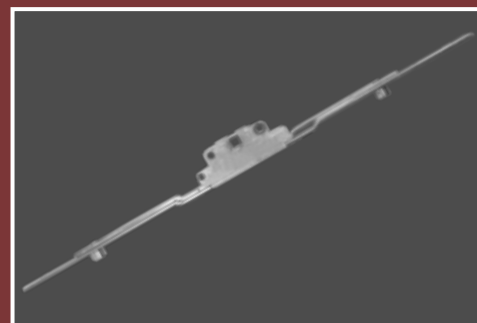


HARDWARE

FOR uPVC DOORS & WINDOWS



Since 1984
Towards Perfection





INTRODUCTION

KAI is an ISO 9001:2015 certified company established in 1984, manufacturing wide spectrum hardware solution for uPVC doors & windows. The product range includes Handles, Hinges, Rollers, Espag and other fabrication accessories like Jointers, Strikers, Stoppers, Packers, Seal Bridges etc.

KAI is indigenous brand, which develops and manufactures complete range of hardware for uPVC doors & windows. The in-house research & development team believes in eco-friendly products with continuous improvement in quality. We develop products based on:

- PROPER PRODUCT DESIGN
- QUALITY RAW MATERIAL
- STANDARD MANUFACTURING SYSTEMS

KAI with its in-house manufacturing capabilities renders its customers the freedom to get the hardware customized for compatibility with respect to their profile fitment for the intended applications with major emphasis on:

- EASE IN ASSEMBLY
- BETTER AND LONG LIFE CYCLE
- HIGH IN AESTHETIC APPEAL AND FINISH

KAI manufactured hardwares are tested in accordance to the following standards:

BS - EN 1191 (Windows & Doors Resistance to repeated opening and closing) for life cycle.

BS - EN ISO 9227 (Corrosion test in artificial atmosphere - Salt spray tests)

BS - EN 1670 (Build ware hardware - corrosion resistance for - requirement and test methods) minimum grade 4 (240 hours) and for coastal locations Grade 5 (480 hours) without red rust.

Scan QR Code

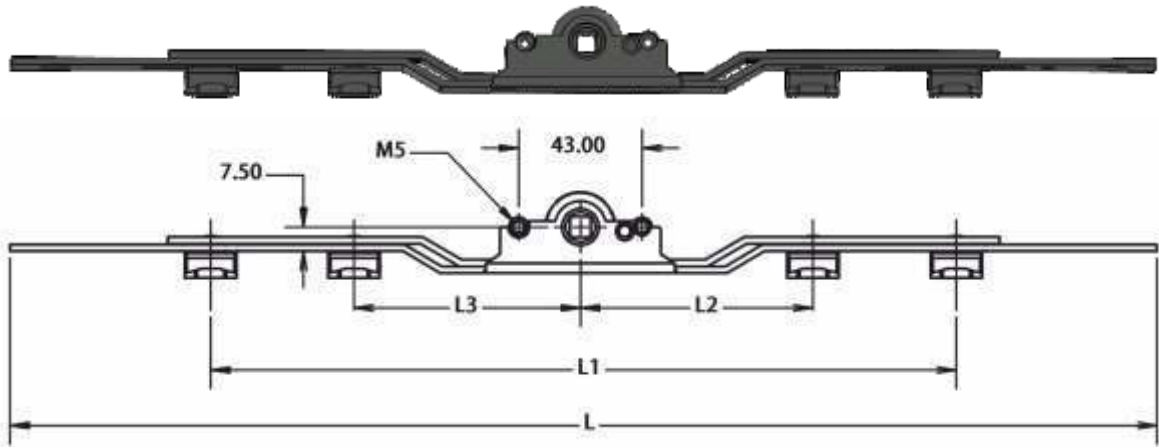


website

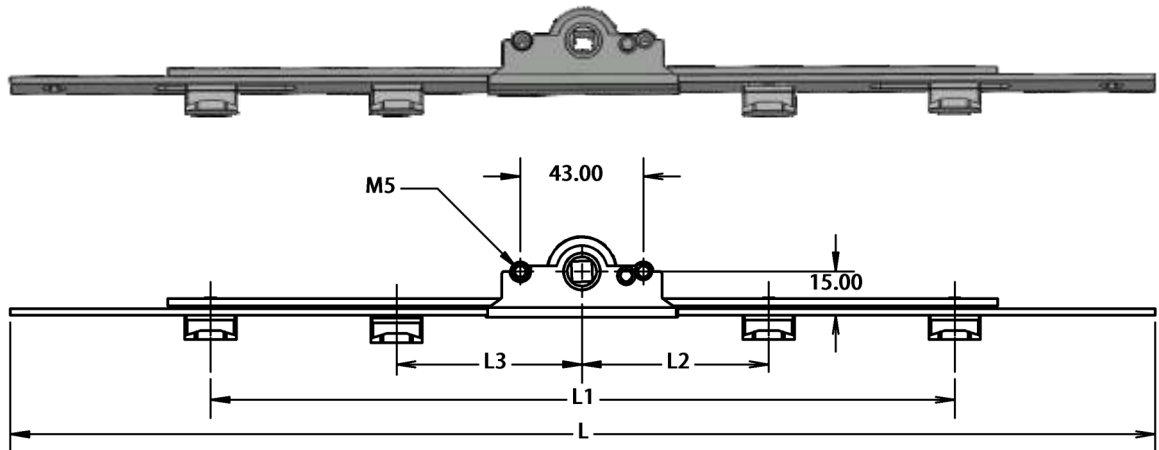


e-catalogue

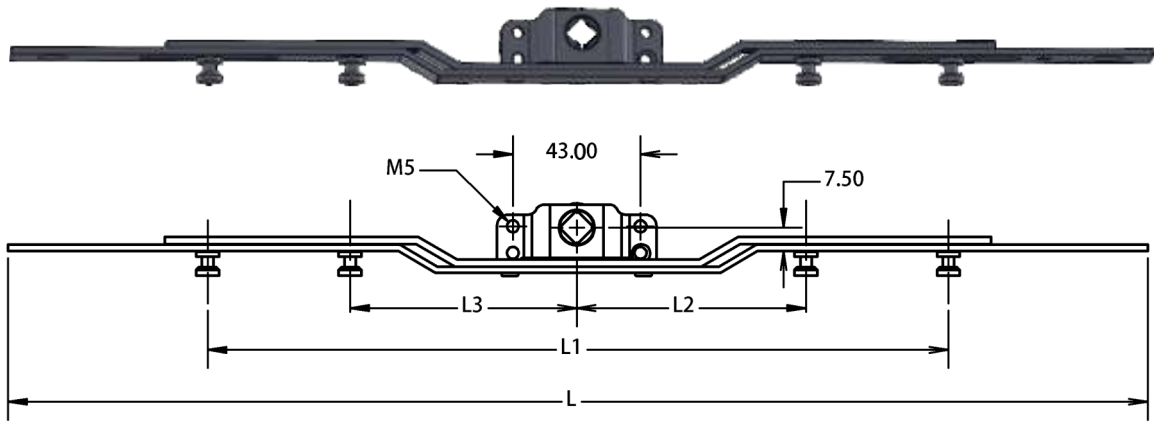
www.kaiproduct.com



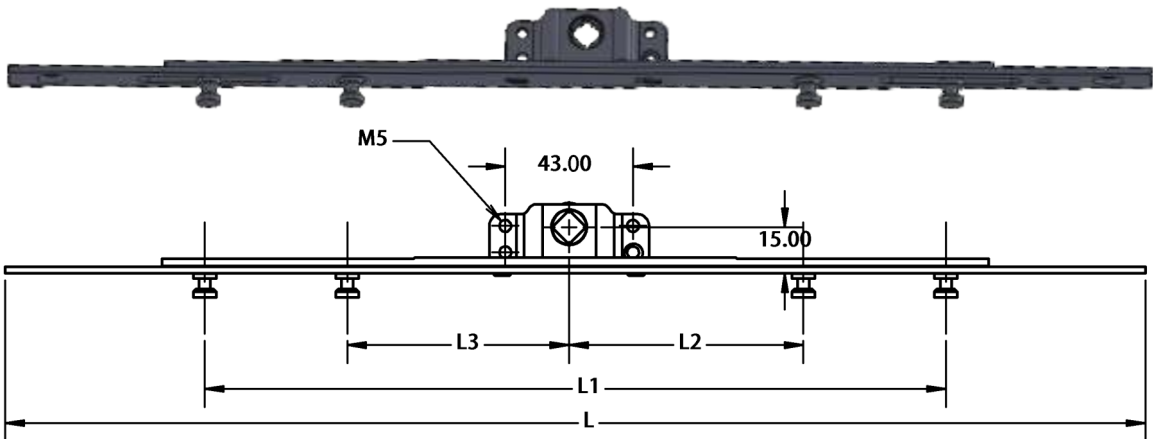
SLIDING ESPAG 7.5mm BACKSET	PRODUCT CODE		L	L1	L2	L3
	SP-602-0400	SP-632-0400	400	260	—	—
	SP-602-0600	SP-632-0600	600	460	—	—
	SP-602-0800	SP-632-0800	800	660	—	—
	SP-602-1000	SP-632-1000	1000	860	—	—
	SP-602-1200	SP-632-1200	1200	1060	170	—
	SP-602-1400	SP-632-1400	1400	1260	170	—
	SP-602-1600	SP-632-1600	1600	1460	170	170
	SP-602-1800	SP-632-1800	1800	1660	170	170
	SP-602-2000	SP-632-2000	2000	1860	170	170
	SP-602-2100	SP-632-2100	2100	1960	170	170
SP-602-2400	SP-632-2400	2400	2260	170	170	
MATERIAL	CARBON STEEL & ZINC	SS 304 & ZINC				
FOR	uPVC SLIDING SYSTEM					
FINISH	ELECTROPLATED - CORROSION RESISTANCE AS PER BS-EN 1670					



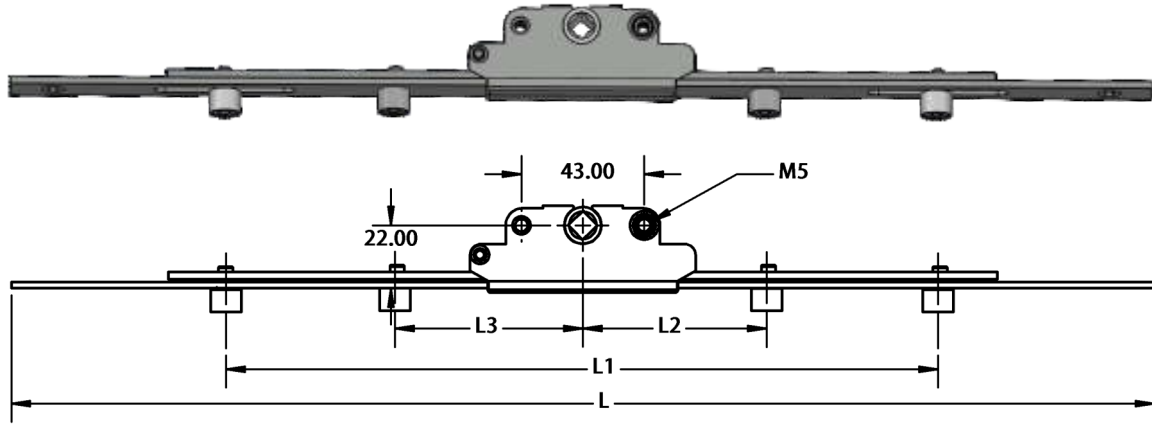
SLIDING ESPAG 15mm BACKSET	PRODUCT CODE		L	L1	L2	L3
	SP-605-0400	SP-635-0400	400	260	—	—
	SP-605-0600	SP-635-0600	600	460	---	---
	SP-605-0800	SP-635-0800	800	660	---	---
	SP-605-1000	SP-635-1000	1000	860	---	---
	SP-605-1200	SP-635-1200	1200	1060	170	---
	SP-605-1400	SP-635-1400	1400	1260	170	---
	SP-605-1600	SP-635-1600	1600	1460	170	170
	SP-605-1800	SP-635-1800	1800	1660	170	170
	SP-605-2000	SP-635-2000	2000	1860	170	170
	SP-605-2100	SP-635-2100	2100	1960	170	170
SP-605-2400	SP-635-2400	2400	2260	170	170	
MATERIAL	CARBON STEEL & ZINC	SS 304 & ZINC				
FOR	uPVC SLIDING SYSTEM					
FINISH	ELECTROPLATED - CORROSION RESISTANCE AS PER BS-EN 1670					



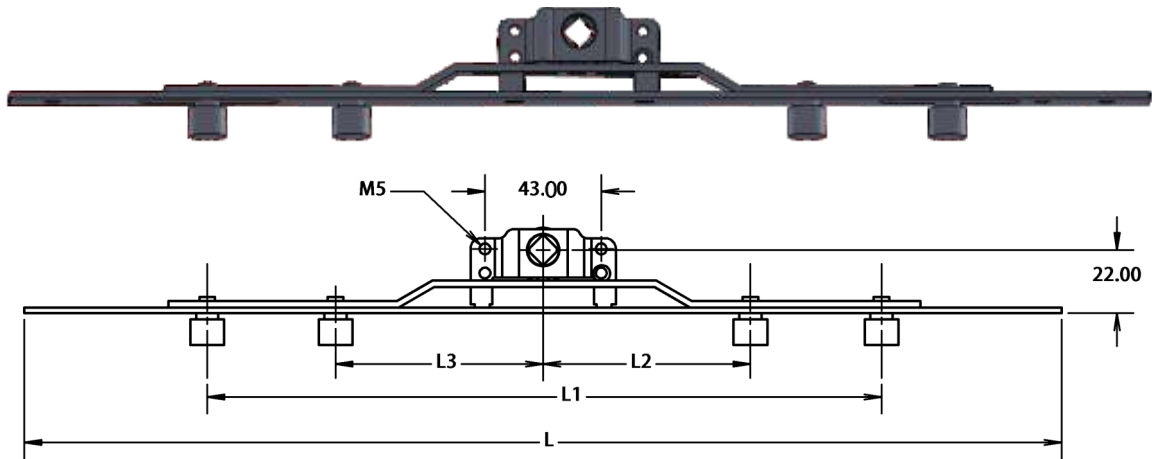
SLIDING ESPAG 7.5mm BACKSET	PRODUCT CODE	L	L1	L2	L3
	SP-610-0400	400	260	—	—
	SP-610-0600	600	460	—	—
	SP-610-0800	800	660	—	—
	SP-610-1000	1000	860	—	—
	SP-610-1200	1200	1060	170	—
	SP-610-1400	1400	1260	170	—
	SP-610-1600	1600	1460	170	170
	SP-610-1800	1800	1660	170	170
MATERIAL	CARBON STEEL				
FOR	uPVC SLIDING SYSTEM				
FINISH	ELECTROPLATED - CORROSION RESISTANCE AS PER BS-EN 1670				



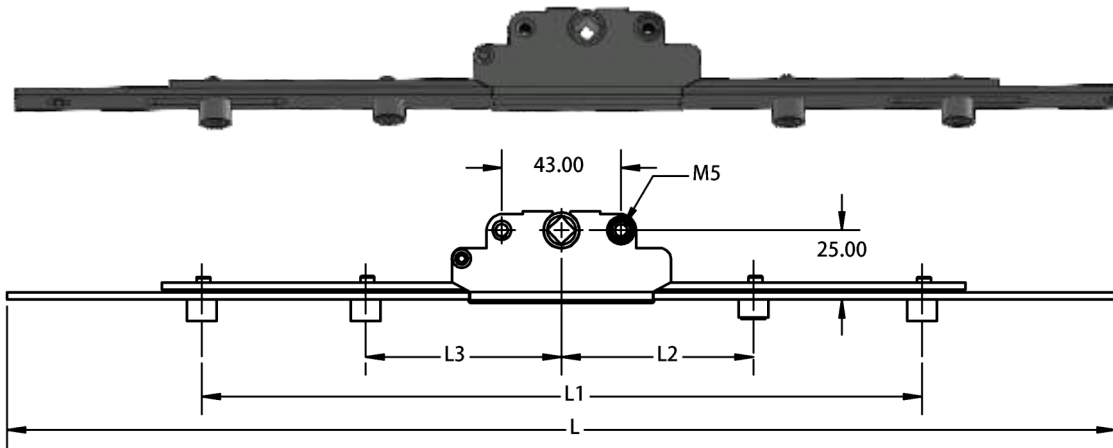
SLIDING ESPAG 15mm BACKSET	PRODUCT CODE	L	L1	L2	L3
	SP-611-0400	400	260	—	—
	SP-611-0600	600	460	—	—
	SP-611-0800	800	660	—	—
	SP-611-1000	1000	860	—	—
	SP-611-1200	1200	1060	170	—
	SP-611-1400	1400	1260	170	—
	SP-611-1600	1600	1460	170	170
	SP-611-1800	1800	1660	170	170
MATERIAL	CARBON STEEL				
FOR	uPVC SLIDING SYSTEM				
FINISH	ELECTROPLATED - CORROSION RESISTANCE AS PER BS-EN 1670				



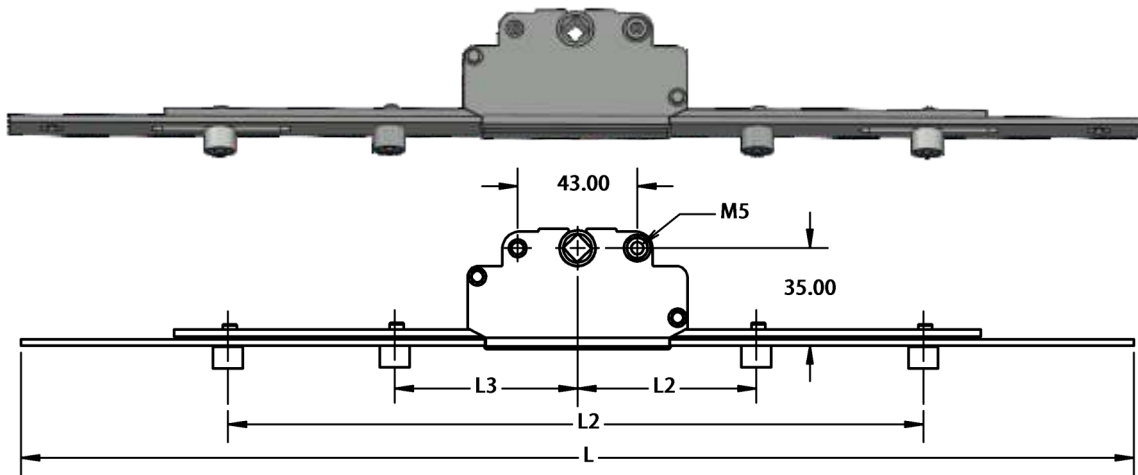
CASEMENT ESPAG 22mm BACKSET	PRODUCT CODE		L	L1	L2	L3
	SP-603-0400	SP-633-0400	400	260	—	—
	SP-603-0600	SP-633-0600	600	460	—	—
	SP-603-0800	SP-633-0800	800	660	—	—
	SP-603-1000	SP-633-1000	1000	860	—	—
	SP-603-1200	SP-633-1200	1200	1060	170	—
	SP-603-1400	SP-633-1400	1400	1260	170	—
	SP-603-1600	SP-633-1600	1600	1460	170	170
	SP-603-1800	SP-633-1800	1800	1660	170	170
	SP-603-2000	SP-633-2000	2000	1860	170	170
	SP-603-2100	SP-633-2100	2100	1960	170	170
SP-603-2400	SP-633-2400	2400	2260	170	170	
MATERIAL	CARBON STEEL & ZINC	SS 304 & ZINC				
FOR	uPVC CASEMENT SYSTEM					
FINISH	ELECTROPLATED - CORROSION RESISTANCE AS PER BS-EN 1670					



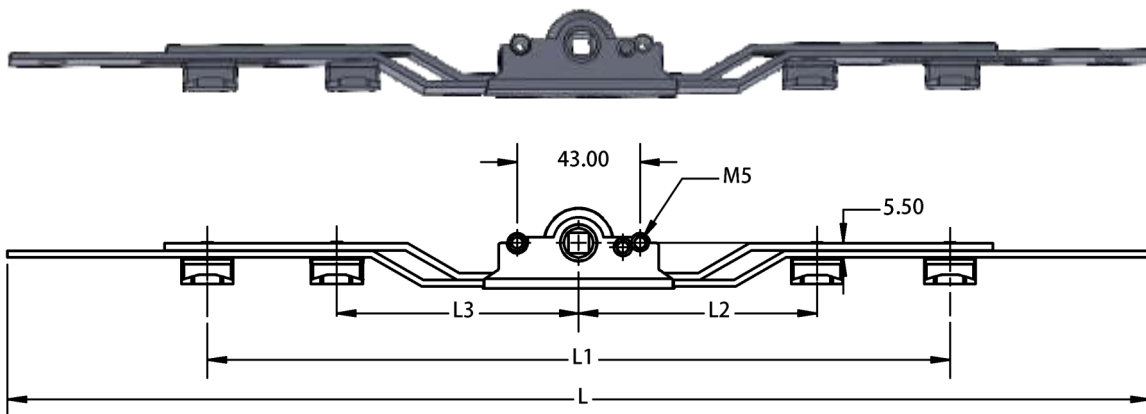
CASEMENT ESPAG 22mm BACKSET	PRODUCT CODE		L	L1	L2	L3
	SP-615-0400		400	260	—	—
	SP-615-0600		600	460	—	—
	SP-615-0800		800	660	—	—
	SP-615-1000		1000	860	—	—
	SP-615-1200		1200	1060	170	—
	SP-615-1400		1400	1260	170	—
	SP-615-1600		1600	1460	170	170
SP-615-1800		1800	1660	170	170	
MATERIAL	CARBON STEEL					
FOR	uPVC CASEMENT SYSTEM					
FINISH	ELECTROPLATED - CORROSION RESISTANCE AS PER BS-EN 1670					



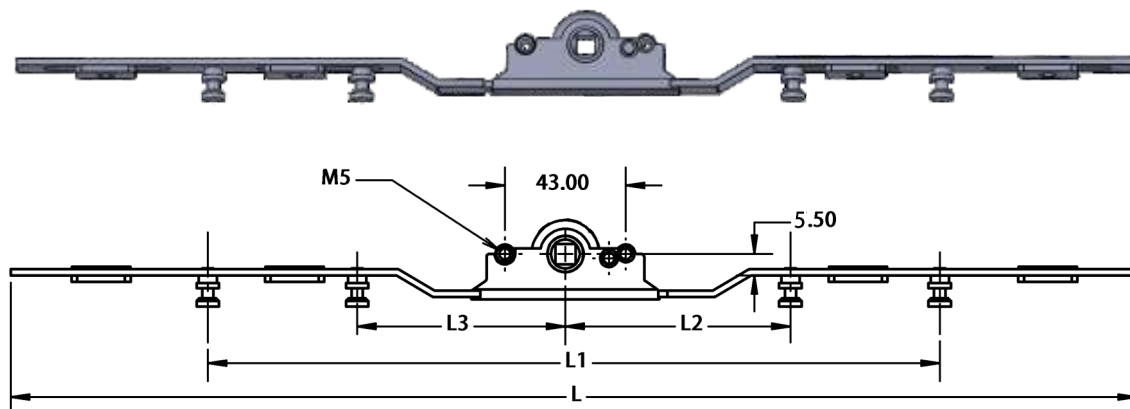
CASEMENT ESPAG 25mm BACKSET	PRODUCT CODE		L	L1	L2	L3
	SP-608-0400	SP-638-0400	400	260	—	—
	SP-608-0600	SP-638-0600	600	460	—	—
	SP-608-0800	SP-638-0800	800	660	—	—
	SP-608-1000	SP-638-1000	1000	860	—	—
	SP-608-1200	SP-638-1200	1200	1060	170	—
	SP-608-1400	SP-638-1400	1400	1260	170	—
	SP-608-1600	SP-638-1600	1600	1460	170	170
	SP-608-1800	SP-638-1800	1800	1660	170	170
MATERIAL	CARBON STEEL & ZINC	SS 304 & ZINC				
FOR	uPVC CASEMENT SYSTEM					
FINISH	ELECTROPLATED - CORROSION RESISTANCE AS PER BS-EN 1670					



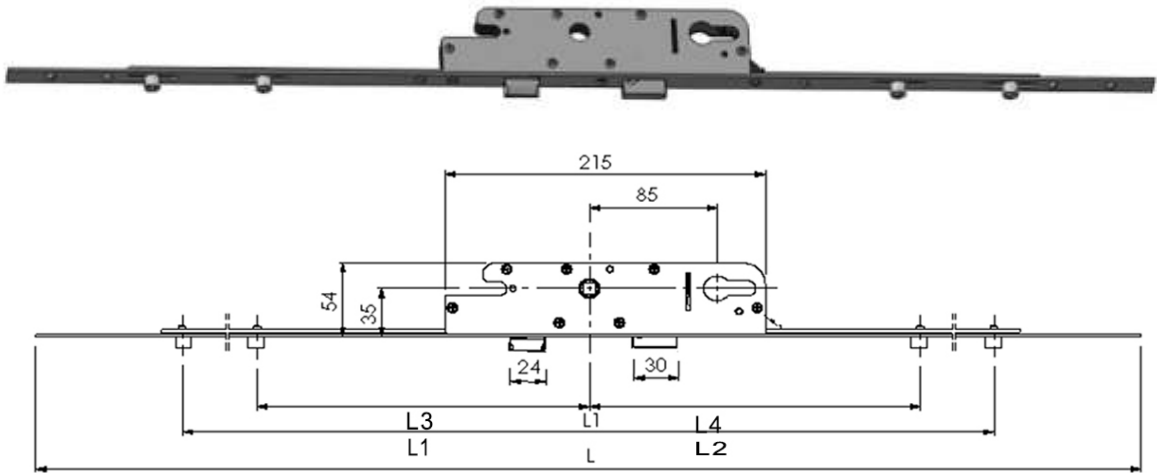
CASEMENT ESPAG 35mm BACKSET	PRODUCT CODE		L	L1	L2	L3
	SP-606-1200	SP-636-1200	1200	1060	170	—
	SP-606-1400	SP-636-1400	1400	1260	170	—
	SP-606-1600	SP-636-1600	1600	1460	170	170
	SP-606-1800	SP-636-1800	1800	1660	170	170
	SP-606-2000	SP-636-2000	2000	1860	170	170
MATERIAL	CARBON STEEL & ZINC	SS 304 & ZINC				
FOR	uPVC CASEMENT SYSTEM					
FINISH	ELECTROPLATED - CORROSION RESISTANCE AS PER BS-EN 1670					



SLIDING ESPAG 5.5mm BACKSET	PRODUCT CODE		L	L1	L2	L3
	SP-612-0400	SP-642-0400	400	260	—	—
	SP-612-0600	SP-642-0600	600	460	—	—
	SP-612-0800	SP-642-0800	800	660	—	—
	SP-612-1000	SP-642-1000	1000	860	—	—
	SP-612-1200	SP-642-1200	1200	1060	170	—
	SP-612-1400	SP-642-1400	1400	1260	170	—
	SP-612-1600	SP-642-1600	1600	1460	170	170
	SP-612-1800	SP-642-1800	1800	1660	170	170
	SP-612-2000	SP-642-2000	2000	1860	170	170
	SP-612-2100	SP-642-2100	2100	1960	170	170
SP-612-2400	SP-642-2400	2400	2260	170	170	
MATERIAL	CARBON STEEL & ZINC	SS 304 & ZINC				
FOR	uPVC SLIDING SYSTEM					
FINISH	ELECTROPLATED - CORROSION RESISTANCE AS PER BS-EN 1670					



SINGLE PLATE SLIDING ESPAG 5.5mm BACKSET	PRODUCT CODE		L	L1	L2	L3
	SP-607-0400	SP-637-0400	400	260	—	—
	SP-607-0600	SP-637-0600	600	460	---	---
	SP-607-0800	SP-637-0800	800	660	---	---
	SP-607-1000	SP-637-1000	1000	860	---	---
	SP-607-1200	SP-637-1200	1200	1060	170	---
	SP-607-1400	SP-637-1400	1400	1260	170	---
	SP-607-1600	SP-637-1600	1600	1460	170	170
	SP-607-1800	SP-637-1800	1800	1660	170	170
	SP-607-2000	SP-637-2000	2000	1860	170	170
	SP-607-2100	SP-637-2100	2100	1960	170	170
SP-607-2400	SP-637-2400	2400	2260	170	170	
MATERIAL	CARBON STEEL & ZINC	SS 304 & ZINC				
FOR	uPVC SLIDING SYSTEM					
FINISH	ELECTROPLATED - CORROSION RESISTANCE AS PER BS-EN 1670					



CASEMENT LOCKABLE ESPAG 35mm BACKSET	PRODUCT CODE		L	L1	L2	L3	L4
	SP-604-1600	SP-634-1600	1600	690	715	205	230
	SP-604-1800	SP-634-1800	1800	790	815	285	310
	SP-604-2000	SP-634-2000	2000	890	915	360	385
	SP-604-2100	SP-634-2100	2100	940	965	395	420
MATERIAL	CARBON STEEL & ZINC	SS 304 & ZINC					
FOR	uPVC CASEMENT SYSTEM						
FINISH	ELECTROPLATED - CORROSION RESISTANCE AS PER BS-EN 1670						



HA-206
DOOR HANDLE



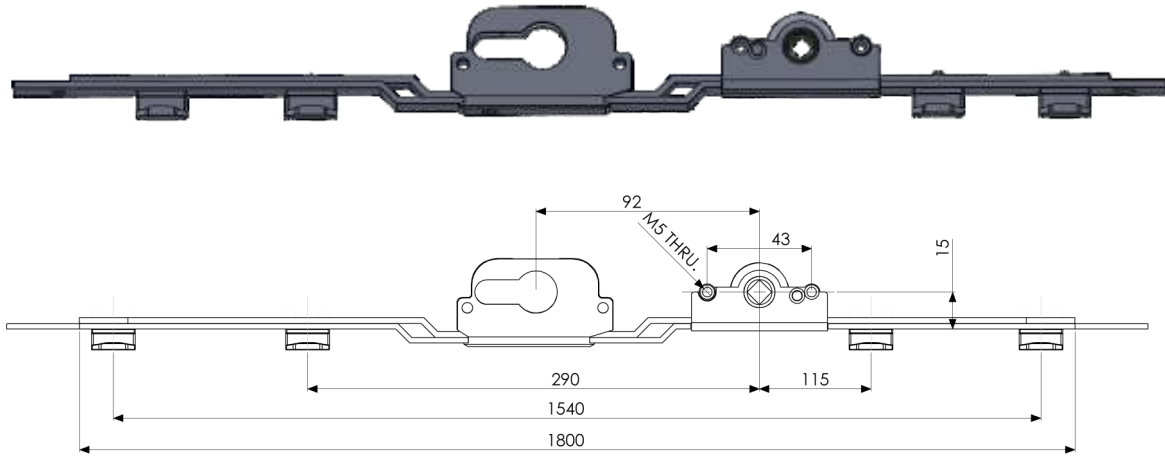
HA-226
DOOR SHORT NECK HANDLE



HA-205
DOOR ROYAL HANDLE



HA-227
DOOR ELEGANT HANDLE



SP - 609 - 1800
SLIDING LOCKABLE ESPAG FOR D - HANDLE
BACKSET - 15mm



HA-217
D-HANDLE



HA-215
D-HANDLE WITHOUT
CYLINDER SLOT



HA-213
D-HANDLE WITHOUT
CYLINDER SLOT & LEVER



HA-220
D-HANDLE WITH ONE
SIDE PLATE



**HA-201
TOUCH LOCK**



**HA-202
POP-UP HANDLE**



**HA-219
SHORT NECK HANDLE**



**HA-218
SLIDING HANDLE**



**HA-228
SLIDING ROYAL HANDLE**



**HA-230
SLIDING ELEGANT HANDLE**



**HA-216
SLIDING HANDLE WITH KEY**



**KAI-MH-01
MESH HANDLE**



**KAI-MH-02
MESH HANDLE C-TYPE**



**HA-203
COCKSPUR HANDLE**



**HA-204
CASEMENT HANDLE**



**HA-207
CASEMENT HANDLE WITH KEY**



**HA-214
CRANK HANDLE**



**HA-223
SASH JAMMER**



**HA-211
DOUBLE HANDLE ONE SIDE KEY**



**HA-210
DOUBLE HANDLE ONE SIDE KEY
ANOTHER SIDE KNOB**



**HA-212
DOUBLE HANDLE NARROW BASE
ONE SIDE KEY**



**HA-224
DOUBLE HANDLE NARROW
BASE ONE SIDE KEY ANOTHER
SIDE KNOB**



ST-403
SLIDING STRIKER



ST-402
SLIDING STRIKER - ZINC



ST-406
SLIDING STRIKER (LG PROFILE)



ST-404
TOUCH LOCK STRIKER



ST-411
CASEMENT STRIKER



ST-412
CASEMENT STRIKER



ST-413
CASEMENT STRIKER



ST-415
FRENCH WINDOW STRIKER FOR ENCRAFT PROFILE



ST-416
STRIKER FOR ENCRAFT PROFILE



ST-417
DECEUNINCK PROFILE STRIKER



ST-418
EN - 42 CASEMENT STRIKER



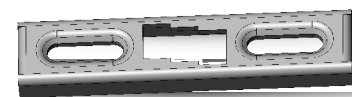
ST-419
FRENCH WINDOW STRIKER



ST-420
FRENCH WINDOW MUSHROOM PIN STRIKER



ST-421
SHOOT BOLT STRIKER (H620128)



ST-422
SHOOT BOLT STRIKER



ST-423
DOOR CENTER STRIKER



ST-424
DOOR COMPRESSION STRIKER
(H620127)



ST-425
STRIKER FOR P62SC02
(H620134)



ST-426
STRIKER FOR P62ST02 (H620135)



ST-427
STRIKER FOR ROLLER CAM 11
(H620136)



ST-428
CASEMENT STRIKER



HI-312
SHEAR FLAT HINGE



HI-316
SHEAR HINGE



HI-301
BUTT HINGE



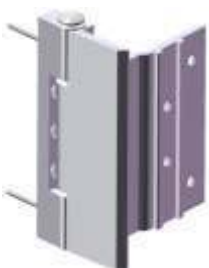
HI-305
ENCRAFT WINDOW PROFILE
CASEMENT BUTT HINGE



HI-310
BUTT HINGE FOR EN62 FLY SCREEN
SASH P62SC03 (H620130)



HI-311
BUTT HINGE FOR CASEMENT
EN42 (H420010)



HI-307
ENCRAFT DOOR PROFILE
ENDURANCE BUTT HINGE



HI-304
3-D HINGE - 120Kg



KAI-SB
SHOOT BOLT - 4", 6", 10", 12"



KAI-LCY-01
LOCK CYLINDER (BSK)



KAI-LCY-02
LOCK CYLINDER (OSK)



KAI-AL-01
ANTI LIFT



KAI-DH-01
DUMMY HANDLE



KAI-AKH-01
ALLEN KEY HANDLE



KAI-RB-01
RIDER BLOCK



SB-501
ANGULAR SEAL BRIDGE



SB-502
MESH SEAL BRIDGE



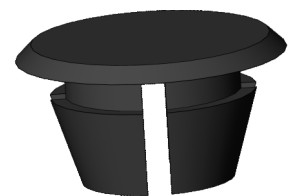
SB-503
FLAT SEAL BRIDGE



KAI-BS-01
BUFFER STOPPER



KAI-SS-03
SLIDING STOPPER



KAI-FC-01
FASTENER CAP



KAI-PP-01
PROFILE PACKER



KAI-GP-01
GLASS PACKER



KAI-DC-01
DRAINAGE CAP



RA-123
WINDOW SINGLE ROLLER POLYMER



RA-124
WINDOW SWING ROLLER POLYMER



RA-125
WINDOW FLAT ROLLER POLYMER



RA-108 DOOR LOW HEIGHT ROLLER
RA-111 DOOR LOW HEIGHT ROLLER
POLYMER



RA-116 SINGLE ROLLER-12mm
RA-118 SINGLE ROLLER-12mm
POLYMER



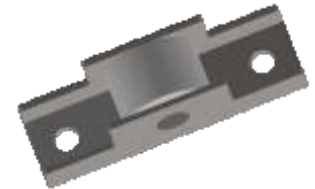
RA-110 ADJUSTABLE ROLLER
RA-104 ADJUSTABLE ROLLER
POLYMER



RA-105
MESH ROLLER



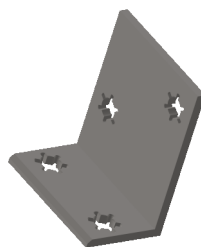
RA-117
BUG MESH ROLLER



RA-127
MESH ROLLER-10mm



RA-130
SINGLE BEARING ROLLER



KAI-MJ-02
MECHANICAL JOINTER



KAI-FB
FASTENER BOLT



KAI-FS (SS-202/SS-304)
FRICTION STAY - 8", 10", 12", 14", 16", 18"



KAI-AS (SS-304)
ARM STAY - 10" & 12"



Since 1984
Towards Perfection

KAMAL AUTO INDUSTRIES

B - 60, SECTOR - 8, NOIDA - 201301, U.P. (INDIA)
+91-120-4323436 | sales@kaiproduct.com
www.kaiproduct.com